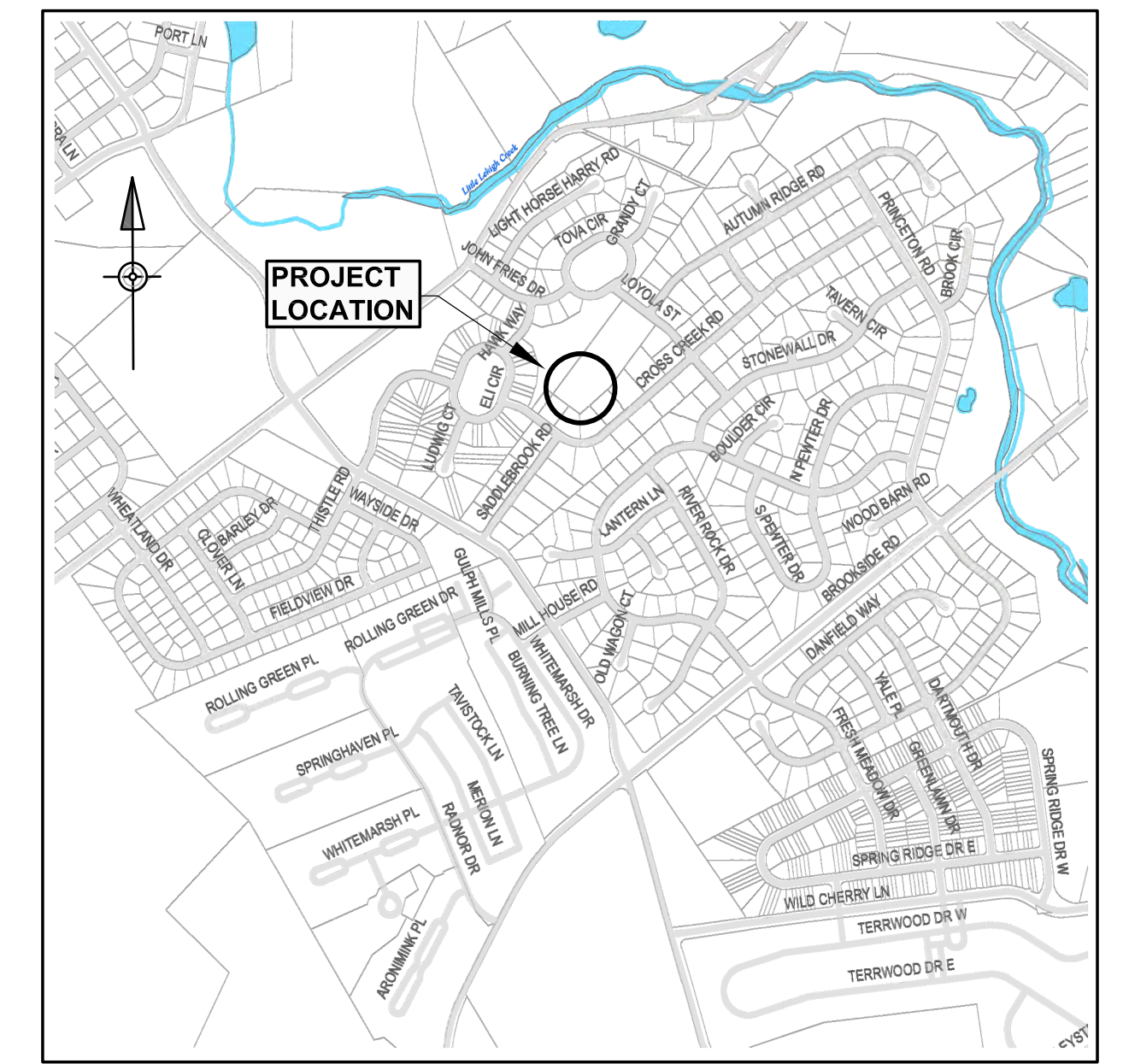
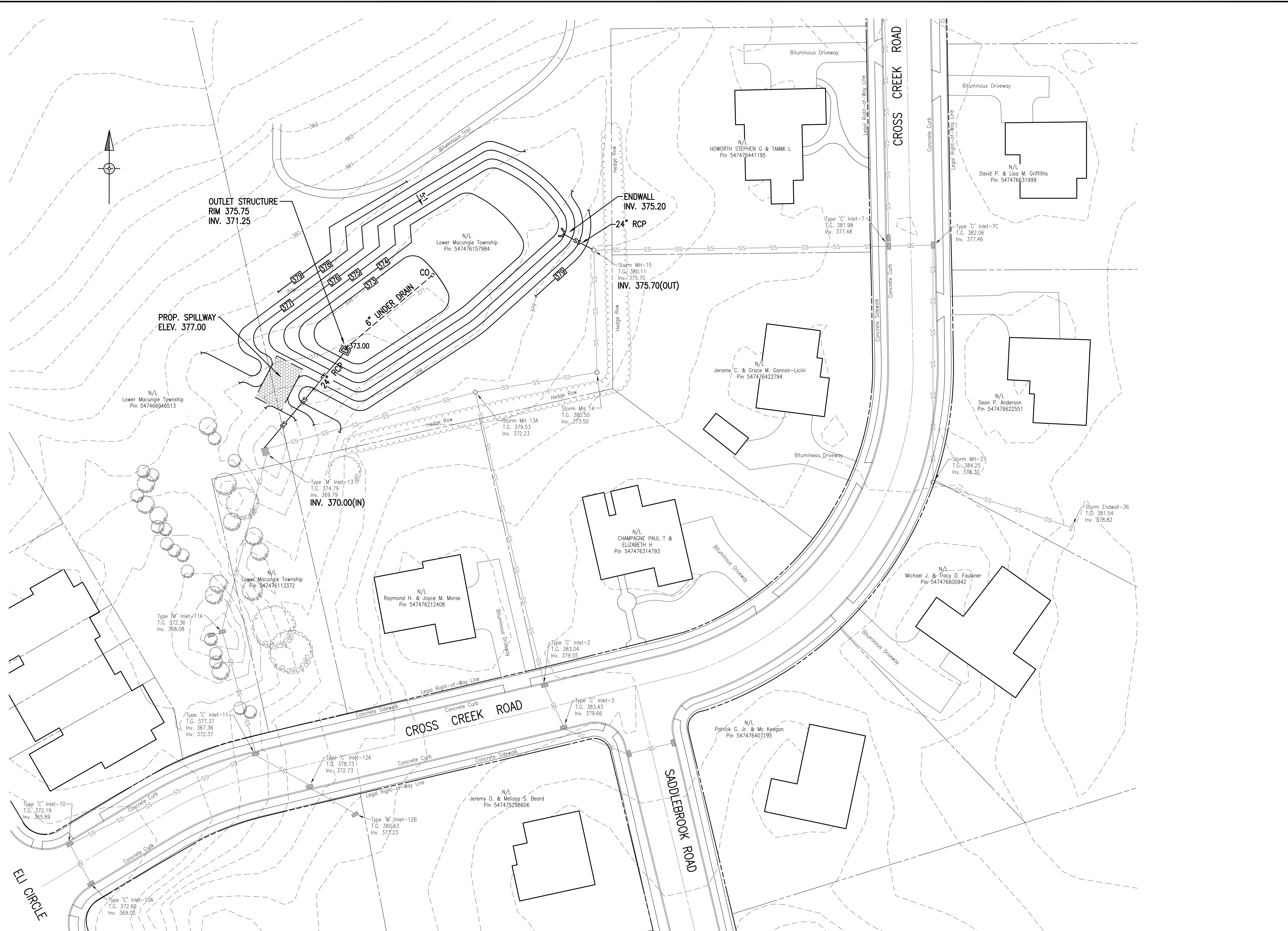


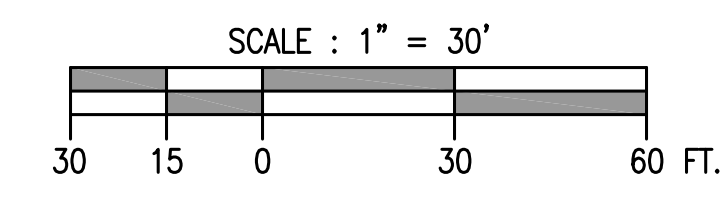
T:\AutoCAD\Lower Macungie Township\12500-55\05\CAD\12500-55\05 SITE PLAN.dwg, 16/2022 9:12:02 AM, ARCH D



**LOCATION MAP**  
 1" = 1000'  
 As reprinted from the CKS Engineer's Inc. Street Map of Lower Macungie, Lehigh County, PA  
 SCALE IN FEET  
 1000 500 0 1000 3000

**LEGEND**

	LEGAL RIGHT-OF-WAY LINE
	PROPERTY LINE
	EXIST. CONTOUR
	EXIST. STORM PIPE AND INLET
	EXISTING TREE LINE
	PROPOSED CONTOUR
	PROPOSED STORM PIPE
	EXISTING STORM INVERT
	PROPOSED STORM INVERT



 4259 W Swamp Road Suite 410 Doylestown, PA 18902 www.cksenineers.com 215.340.0600	Rev. No.	Date	Description	
	<b>CONSTRUCTION PLAN</b>			
	<b>2407 CROSS CREEK ROAD LOWER MACUNGIE TOWNSHIP, LEHIGH COUNTY</b>			
Date:	Scale:	Drawn By:	Plan No.	Sheet No.
6/30/21	1" = 30'	CJ	12500-55.005	2 OF 5
Checked By:				